

## Sensory Rating Sheet™



- Mellow lighting



- Rumbling noises
- Intermittent bird sounds
- Creaking sound



## Fantasy

Worlds of Myth and Magic



- No noticeable scent



This is an interactive walk-through exhibit featuring art, costumes and design pieces.



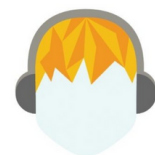
- There are screens you can interact with, but it is not required



**Sensory impact is rated on a scale from 0 (no impact) to 5 (very high impact).**



- There is no uneven or moving terrain



SENSORY ACCESS

ACCESS FOR ALL

[www.SensoryAccess.org](http://www.SensoryAccess.org)

## Sensory Rating Sheet™



- This is a visual exhibit with low- level calm lighting



- This is a quiet exhibit, max decibels are 69 dB



## Guitar Gallery



- No noticeable scent



This is a visual exhibit displaying various guitars with mellow lighting and low volume music



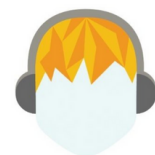
- No tactile required



**Sensory impact is rated on a scale from 0 (no impact) to 5 (very high impact).**



- There is no uneven or moving terrain



SENSORY ACCESS

ACCESS FOR ALL

[www.SensoryAccess.org](http://www.SensoryAccess.org)

## Sensory Rating Sheet <sup>TM</sup>



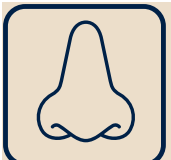
- Mellow lighting



- Music when you enter
- Narration overlaps music



## Wild Blue Angel: Hendrix Abroad, 1966-1970



- No noticeable scent



This exhibit features  
instruments and memorabilia.



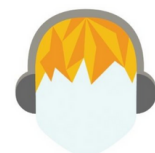
- Nothing tactile



**Sensory impact is rated on a  
scale from 0 (no impact) to  
5 (very high impact).**



- There is no uneven or moving terrain
- There is nowhere to sit



SENSORY ACCESS

ACCESS FOR ALL

[www.SensoryAccess.org](http://www.SensoryAccess.org)

## Sensory Rating Sheet™



- This exhibit is visually busy
- Some mild flashing from screens



- Mild sound bleed from Sound Lab or if something is happening in Skychurch



## Hidden Worlds

The Films of Laika



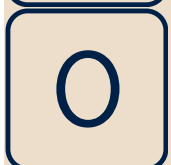
- No noticeable scent



This exhibit features characters, props and other descriptions of Laika Studio's films. There are screens showing interviews about the films. Videos do have captions.



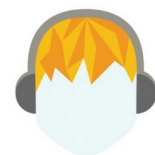
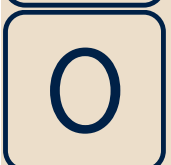
- There is a Stop Motion Studio you can participate in that requires some touching of buttons.



**Sensory impact is rated on a scale from 0 (no impact) to 5 (very high impact).**



- There is no uneven or moving terrain
- You have to walk through a lit tunnel
- Seating is available



SENSORY ACCESS

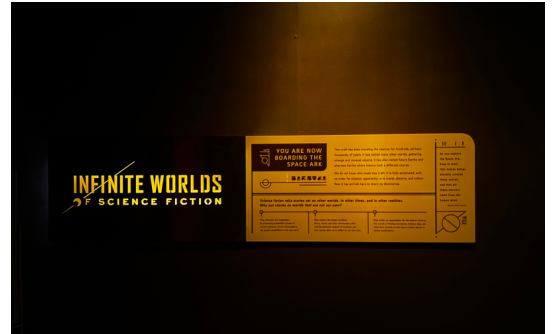
ACCESS FOR ALL

[www.SensoryAccess.org](http://www.SensoryAccess.org)

## Sensory Rating Sheet™



- Room lighting has some flashing
- Mild flashing from screens



- Low bass space sounds
- Decibel levels 71 dB
- Lots of people talking



## Infinite Worlds of Science Fiction



- No noticeable scent



This is an exhibit with props, costumes, and details about science fiction films and stories



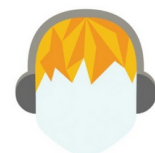
- Interactive buttons and tablets



**Sensory impact is rated on a scale from 0 (no impact) to 5 (very high impact).**



- There is no uneven or moving terrain
- Limited seating available
- There are stairs to enter but an elevator is available



SENSORY ACCESS

ACCESS FOR ALL

[www.SensoryAccess.org](http://www.SensoryAccess.org)

## Sensory Rating Sheet<sup>TM</sup>



- Lighting is mild

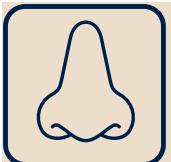


- Loud video
- Highest decibel level = 62 dB



## Nirvana

Taking Punk to the Masses



- No noticeable scent



This is a visual exhibit with photographs, images and other memorabilia from the band.



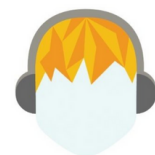
- Nothing tactile



**Sensory impact is rated on a scale from 0 (no impact) to 5 (very high impact).**



- There is no uneven or moving terrain
- This is a smaller exhibit so it can feel crowded



SENSORY ACCESS

ACCESS FOR ALL

[www.SensoryAccess.org](http://www.SensoryAccess.org)

## Sensory Rating Sheet <sup>TM</sup>



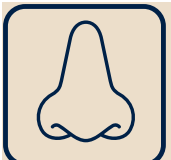
- Blood and gore
- Somewhat intense
- Screens flickering
- Hanging "bodies"
- Red lighting



- Scary music and sounds overlapping
- Deep bass sound - very unsettling
- High-pitched sounds
- Bell tolling

## Scared to Death

The Thrill of Horror Film



- No noticeable scent

This exhibit is all about horror films and the general atmosphere is meant to be somewhat unsettling. There are intense visuals and sounds.

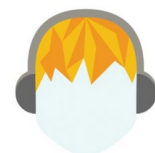


- You can interact with items like the TV screen, but it is not required

**Sensory impact is rated on a scale from 0 (no impact) to 5 (very high impact).**



- There is no uneven or moving terrain
- There are stairs to enter but elevator is available



SENSORY ACCESS

ACCESS FOR ALL

[www.SensoryAccess.org](http://www.SensoryAccess.org)

## Sensory Rating Sheet <sup>TM</sup>



- Calm and mellow lighting
- Light changes slowly



- Monitors softly play
- Nice and quiet



## Science Fiction and Fantasy Hall of Fame



- No noticeable scent



This is a very calming space.  
We recommend coming in  
here if you get overwhelmed  
in other spaces!



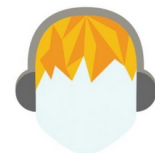
- You can interact with the lit table,  
but it is not required



**Sensory impact is rated on a  
scale from 0 (no impact) to  
5 (very high impact).**



- There is no uneven or moving  
terrain
- There are places to sit and watch  
the video



SENSORY ACCESS

ACCESS FOR ALL

[www.SensoryAccess.org](http://www.SensoryAccess.org)



## Sensory Rating Sheet <sup>TM</sup>



- Lighting can flash, shine in your eyes, and strobe



- Loud in most areas
- The quietest place is against the wall next to the steel towers or near the exit to exhibits



## Sky Church



- No noticeable scent



The sensory experience of Sky Church depends on the type of event.



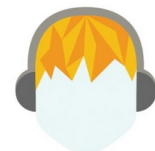
- Crowding is likely during events/concerts and on busy days such as weekends and summertime



**Sensory impact is rated on a scale from 0 (no impact) to 5 (very high impact).**



- Limited seating may be available, depending on the occasion



SENSORY ACCESS

ACCESS FOR ALL

[www.SensoryAccess.org](http://www.SensoryAccess.org)

## Sensory Rating Sheet <sup>TM</sup>



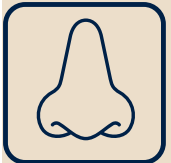
- Bright lighting



- Loud in center area
- Soundproof in music rooms



## Sound Lab



- No noticeable scent



This exhibit allows you to play different instruments.

There can be a wait for the music rooms ("Jam Studios") but times are posted above each door.



- Instruments are tactile



**Sensory impact is rated on a scale from 0 (no impact) to 5 (very high impact).**



- There are some places to sit



SENSORY ACCESS

ACCESS FOR ALL

[www.SensoryAccess.org](http://www.SensoryAccess.org)

## Sensory Rating Sheet™



- Room lighting is mild
- Some flashing from screens
- Screens are bright



- Lots of competing sounds overlapping
- Video Game sounds
- Lots of people talking



## Indie Game

Revolution



- No noticeable scent



This is a busy exhibit with a ton of different video games all in one space, with people talking excitedly while playing various games



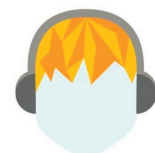
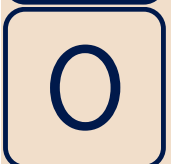
- You do have to touch items to play the games
- Various kinds of controllers available



**Sensory impact is rated on a scale from 0 (no impact) to 5 (very high impact).**



- There is no uneven or moving terrain
- There is a lot of seating available



SENSORY ACCESS

ACCESS FOR ALL

[www.SensoryAccess.org](http://www.SensoryAccess.org)

## Sensory Rating Sheet™



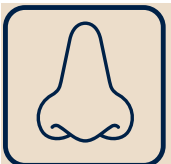
- Some flashing from a screen when you first enter

1.5



- Complex noise/Overlapping sound
- First room is loudest

2



- No noticeable scent

0



- You can interact with a display but it is not required

0



- The exhibit is narrow at times which leads to crowding
- There are some benches for resting

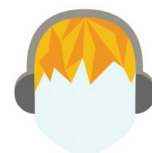
3.5



## Massive: The Power of Pop Culture

This exhibit exits into another exhibit (Nirvana)

**Sensory impact is rated on a scale from 0 (no impact) to 5 (very high impact).**



SENSORY ACCESS

ACCESS FOR ALL

[www.SensoryAccess.org](http://www.SensoryAccess.org)